

swingo® XP-R

Preparation



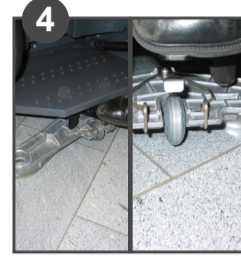
1 Unplug cable charger, check if emergency cut off switch is free (outer position) and start the machine with the ignition key.



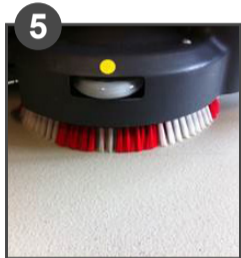
2 Fill solution tank (blue bag) with clean water or use Service Station system to fill tank with ready dosed cleaning solution.



3 Dose chemicals into dosing aid and pour into solution tank, then put the solution suction hose (with filter) into the solution tank.



4 Mount the squeegee: position pockets of the squeegee (yellow) exactly under the squeegee holder and push holder down



5 Place the brush under the machine and start the machine. The brush will connect directly. Ensure the brush is well in the centre.



6 Switch the machine on with key switch on the control panel by turning the key to 'START' (it will then snap back to 'I' automatically).



7 Start cleaning operation with the START button. All cleaning functions will then start automatically.



8 OPTIONAL: adjust water flow (yellow) and brush pressure (red) manually with the '+' or '-' button.



9 OPTIONAL: switch on/off functions manually:
Suction motor (blue)
Spot cleaning (red)
Slow turtle speed (yellow)



10 Clean the floor. Afterwards switch off cleaning functions with STOP, then switch off machine with the key switch.



11 Drain recovery tank with the draining hose. To reduce the water flow squeeze the rubber tube.



12 Remove and clean the yellow dirt sieve



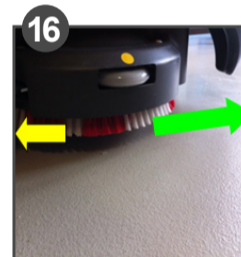
13 Remove and clean the fresh water container (bag) and allow to air dry; then clean the dirty water tank.



14 Clean the fresh water filter.



15 Clean the suction filter.



16 Remove the brushes: release the brushes with your feet or hands (wear gloves).



17 Remove the squeegee: compress locking spring. Clean squeegee and allow to air dry.



18 Clean machine with moist cloth.



19 Store machine with open tank (for ventilation).



20 Switch the machine off with the ignition key (turn to '0'); then plug the cable of the battery charger into a power socket.

Operation

Maintenance

ATTENTION!

Do not use the machine before you have read and understood the operating instructions!
Questions: 1-800-558-2332

